

**DOWNUNDER4GOLD**

# DMT-100SD

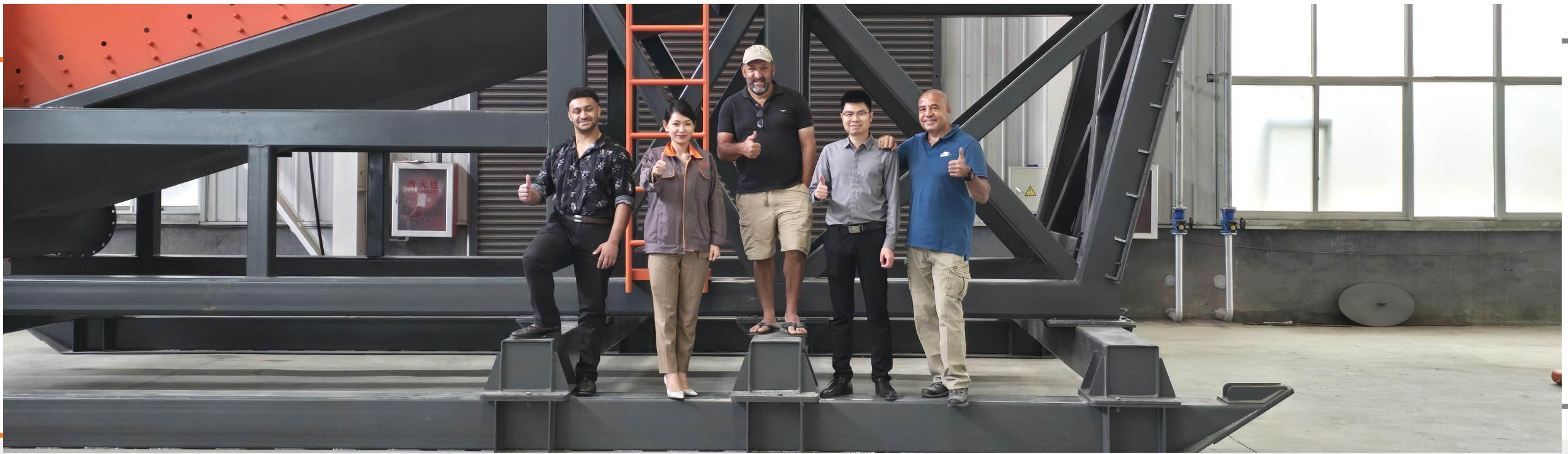
## Gold Shaker Wash Plant

Downunder (Shandong) Mining Technology Co.,Ltd.

**Proudly Made In China**

Product Overview



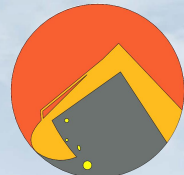


## About Downunder4gold

### Proudly Made In China

Downunder (Shandong) Mining Technology Co., Ltd. (Downunder4gold), established in 2023, is a trusted machinery enterprise specializing in artisanal and small-scale gold mining (ASGM) solutions, large-scale gold mining equipment manufacturing, and comprehensive one-stop services. Backed by our in-house machinery factory, we integrate design, production, and supply to deliver end-to-end value for our clients. Our team of seasoned designers and fabricators is dedicated to providing premium-quality services, ensuring every product meets the highest industry standards. Headquartered in Weifang, Shandong Province, China, we operate as a global innovator and supplier of gold mining machinery, complemented by robust trading and sourcing capabilities.

What sets us apart? Our uniquely engineered equipment is designed for exceptional efficiency—streamlining operations and saving your team critical time across the mining season. Beyond machinery, we stand by you as a reliable partner: our highly experienced professionals offer lifelong mechanical and technical support, ensuring your equipment performs at its best, from installation to long-term operation. Choose Downunder4gold—where innovation meets reliability, and your success is our priority.



DOWNUNDER4GOLD

# CONTENTS

---

**1**

**Product Introduction**

**5**

**Applications**

**2**

**Key Features**

**6**

**Advantages**

**3**

**Components**

**7**

**Considerations**

**4**

**How It Works**

**8**

**Product Parameters**



DOWNUNDER4GOLD

# Part 01

## Product Introduction

Downunder (Shandong) Mining Technology Co.,Ltd.



Product Overview



DOWNUNDER4GOLD

Downunder (Shandong) Mining Technology Co.,Ltd.

Factory address: No.777 Qingling road, Qingzhou city, Weifang, Shandong Province, China

Mobile: +8615779797570 Email: downunder4gold@163.com

## Product Introduction



**DMT-100SD gold shaker wash plant** is a large-scale, high-capacity mining equipment designed for efficient gold recovery from placer deposits, such as riverbeds, alluvial soils, or other gold-bearing materials. This type of wash plant is capable of processing 100~200 tons of material per hour, making it ideal for commercial mining operations, large-scale contractors, or mining companies with significant gold-bearing material to process.



DOWNUNDER4GOLD

## Part 02

# Key Features

Downunder (Shandong) Mining Technology Co.,Ltd.



Product Overview



DOWNUNDER4GOLD

**Downunder (Shandong) Mining Technology Co.,Ltd.**

Factory address: No.777 Qingling road, Qingzhou city, Weifang, Shandong Province, China

Mobile: +8615779797570 Email: downunder4gold@163.com

## Key Features



### 1 High Capacity

Processes up to 150~200 tons per hour, making it suitable for large-scale operations.

### 2 Shaker Design

Features a large, shaker screen to classify and separate material by size, ensuring efficient washing and gold recovery.

### 3 Durability

Built with heavy-duty materials to withstand harsh mining conditions and continuous operation.

### 4 Modular Design

Often modular for easy assembly, disassembly, and transportation..

### 5 Water Recycling System

Includes water recycling systems to reduce water consumption and environmental impact.

### 6 Customizable

Can be tailored to specific mining conditions, such as adding a sluice box, centrifugal concentrator, or other gold recovery systems.

### 7 Low Maintenance

Designed for minimal downtime and easy maintenance.



DOWNUNDER4GOLD

# Part 03

## Components

Downunder (Shandong) Mining Technology Co.,Ltd.



Product Overview



DOWNUNDER4GOLD

Downunder (Shandong) Mining Technology Co.,Ltd.

Factory address: No.777 Qingling road, Qingzhou city, Weifang, Shandong Province, China

Mobile: +8615779797570 Email: downunder4gold@163.com

## Components

### 1. Feeding Hopper:

Where raw material is loaded into the plant. Hopper with vibrating, Water jets inside hopper to wash the material, Ensures consistent material feed

### 2. Vibrating Screen:

A shaker/vibrating screen that separates larger rocks and debris from finer material. The shaker screen is often lined with mesh or punch plates to classify material by size.

### 3. Spray Bars:

Water jets inside the hopper and over the shaker deck wash the material, breaking up clay and releasing gold particles.

### 4. Sluice Box:

A gold recovery system with riffles to trap gold particles as water washes the material through.

### 5. Water Pump:

Supplies water to the shaker screen and spray bars for washing.

### 6. Concentrator (Optional):

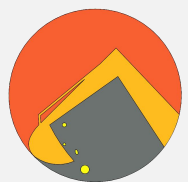
Additional equipment like a centrifugal concentrator or shaking table can be added to improve gold recovery.

### 7. Generator (Optional):

Provides power in remote locations without electricity.

### 8. Support Structure:

A sturdy frame to support the Shaker, sluice box, and other components.



DOWNUNDER4GOLD

# Part 04

## How It Works

Downunder (Shandong) Mining Technology Co.,Ltd.



Product Overview



DOWNUNDER4GOLD

Downunder (Shandong) Mining Technology Co.,Ltd.

Factory address: No.777 Qingling road, Qingzhou city, Weifang, Shandong Province, China

Mobile: +8615779797570 Email: downunder4gold@163.com

## How It Works



### 1 Material Feeding

Raw material (gravel, soil, or sediment) is fed into the hopper.

### 2 Gold Recovery

Water from the spray bars breaks down clay and washes the material, allowing gold and finer particles to pass through the shaker screen.

### 3 Washing and Classification

The washed material flows into the sluice box, where gold particles are trapped by the riffles.

### 4 Concentrate Collection

To collect all the concentrate from gold recovery system, such as sluice box, jigs, centrifugal concentrator etc.

### 5 Final Recovery

To enrich gold concentrate into high-grade gold particles or smelted gold bars, we utilize equipment such as shaking tables, amalgamation units, and smelting furnaces.

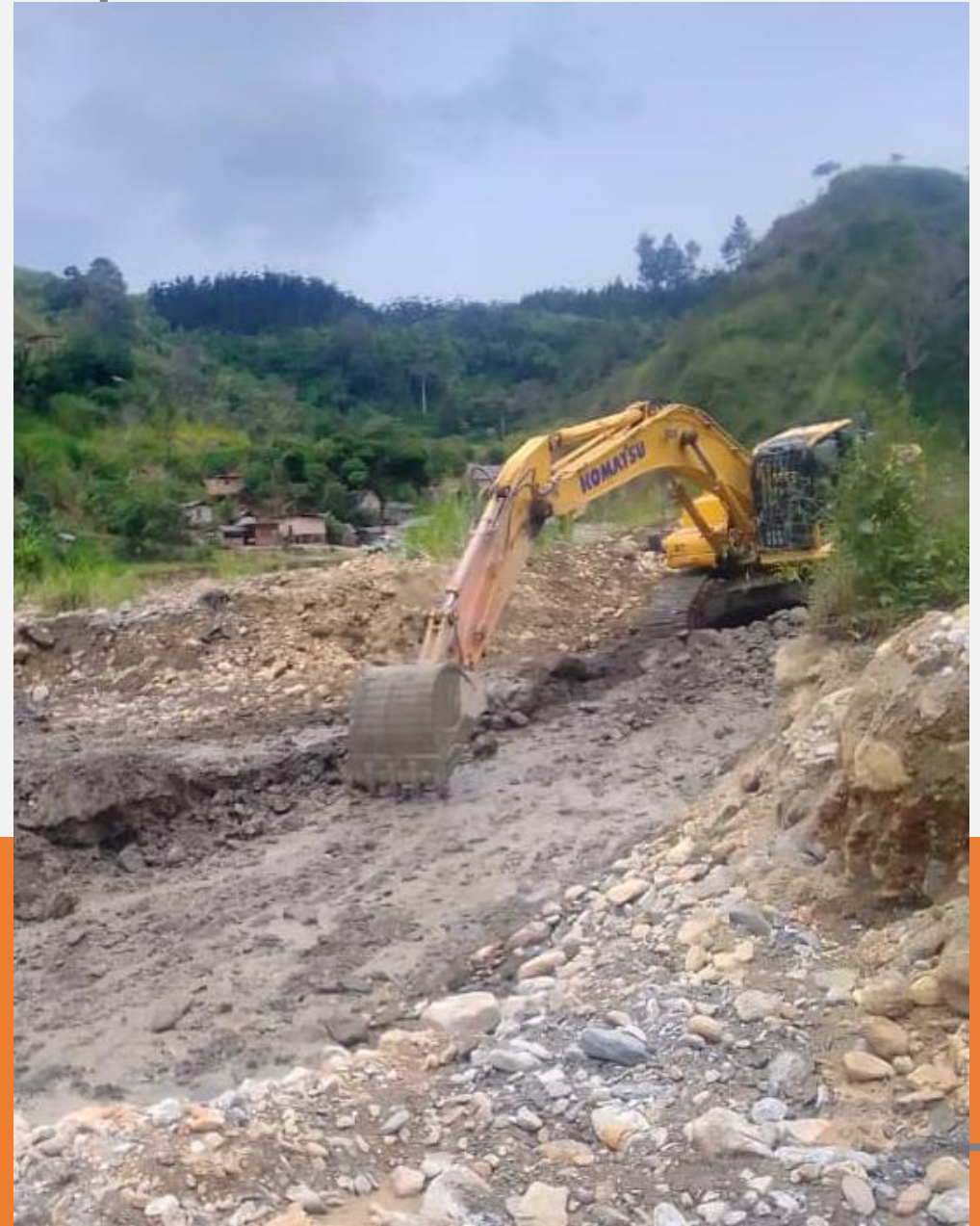


DOWNUNDER4GOLD

# *Part 05*

## **Applications**

Downunder (Shandong) Mining Technology Co.,Ltd.



Product Overview



DOWNUNDER4GOLD

Downunder (Shandong) Mining Technology Co.,Ltd.

Factory address: No.777 Qingling road, Qingzhou city, Weifang, Shandong Province, China

Mobile: +8615779797570 Email: downunder4gold@163.com

## Applications



Alluvial gold recovery in riverbeds or floodplains



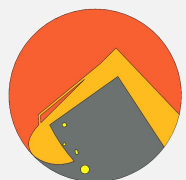
Large-scale placer gold mining



Processing large volumes of gold-bearing material



Commercial mining operations



DOWNUNDER4GOLD

# Part 06

## Advantages

Downunder (Shandong) Mining Technology Co.,Ltd.



Product Overview



DOWNUNDER4GOLD

Downunder (Shandong) Mining Technology Co.,Ltd.

Factory address: No.777 Qingling road, Qingzhou city, Weifang, Shandong Province, China

Mobile: +8615779797570 Email: downunder4gold@163.com

## Advantages

1

### High Throughput

Capable of processing 100~200 tons of material per hour, making it efficient for large operations.

2

### Efficient Gold Recovery

Combines shaker deck washing and sluice box recovery for high gold recovery rates.

3

### Portable or Semi-Portable

Many models are designed for easy relocation, though they are larger than mini wash plants.

4

### Scalable

Can be customized with additional equipment to improve recovery rates.

5

### Environmentally Friendly

Water recycling systems reduce water usage and environmental impact. It's optional.



# Part 07

## Considerations

Downunder (Shandong) Mining Technology Co.,Ltd.





DOWNUNDER4GOLD

Downunder (Shandong) Mining Technology Co.,Ltd.

Factory address: No.777 Qingling road, Qingzhou city, Weifang, Shandong Province, China

Mobile: +8615779797570 Email: downunder4gold@163.com

# Considerations



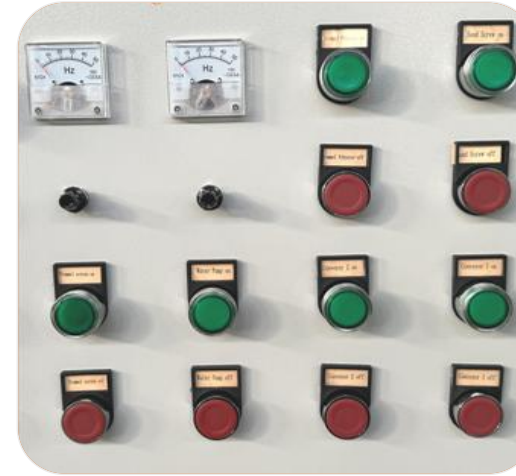
## Water Supply 01

We need to evaluate water quality: if the water is heavily contaminated, we should select a submersible pump designed for better handling of muddy conditions; if the water quality is good, a diesel centrifugal water pump is more suitable.



## Power Supply 02

In remote mining areas, our gold washing plant can utilize either industrial power or generator power.



## Setup Time 03

We allocate more time to design and manufacturing in our in-house factory, while devoting significantly less to onsite installation at mining sites.



## Trommel/Shaker 04

Compared to the trommel, the shaker deck has a higher capacity and can handle larger rocks, attributed to its robust heavy-duty structure.



DOWNUNDER4GOLD

# Part 08

## Product parameters

Downunder (Shandong) Mining Technology Co.,Ltd.



Product Overview



DOWNUNDER4GOLD

Downunder (Shandong) Mining Technology Co.,Ltd.

Factory address: No.777 Qingling road, Qingzhou city, Weifang, Shandong Province, China

Mobile: +8615779797570 Email: downunder4gold@163.com

# Product parameters



## Technical Data Sheet: DMT-100SD gold shaker wash plant

### General Specifications

Model	DMT-100SD
Capacity	150-200 tons per hour (depending on material type and conditions)
Power Requirement	60-100 kW (depending on configuration)
Water Requirement	400 cubic meter hour (m <sup>3</sup> /h)
Dimensions (L x W x H)	8900*2300*5700 mm (approx.)
Weight	12000~16000 kg (depending on configuration)
Material	High-grade steel (wear-resistant and durable)

### Shaker Deck Specifications

Screening Area	7.5 m <sup>2</sup> (1.5m*5m)
Feed hopper size	3.4*2.4m (Suit for load in container)
Screen Mesh Size	Customizable (e.g., 10mm, 20mm, or 30mm)
Deck Drive Type	Vibrating motor 11kw
Screen material	High manganese steel
Electric Control Cabinet	11 KW soft start box

### Sluice Box Specifications

Length	6-12 meters
Width	1.0 meters or 2.0 meters
Riffle Design	Hungarian riffles or expanded metal riffles
Matting	Rubber matting or miner's moss or dream mat for gold trapping
Adjustability	Sluice angle can be adjusted for optimal recovery

### Water System

Water Pump	8 inch centrifugal pump or submersible pump
Flow Rate	400 m <sup>3</sup> /h-600 m <sup>3</sup> /h
Water Recycling	Optional water recycling system available
Hose Diameter	6-8 inches
Hose Type	PVC Lay-flat or rubber hose



DOWNUNDER4GOLD

Downunder (Shandong) Mining Technology Co.,Ltd.

Factory address: No.777 Qingling road, Qingzhou city, Weifang, Shandong Province, China

Mobile: +8615779797570 Email: downunder4gold@163.com

# Product parameters



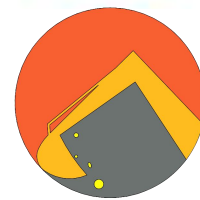
This technical data sheet provides a comprehensive overview of a 150~200 ton-per-hour gold shaker wash plant. For specific details or customization options, consult Downunder4gold.

Power Options	
Electric Motor	Vibrating motor 11kw + Water pump 55kw (standard)
Diesel Engine	Optional for remote locations
Generator	Available as an add-on for off-grid operations
Optional Add-Ons	
Centrifugal Concentrator	Enhances fine gold recovery.
Shaking Table	For final concentration of gold.
Conveyor Belt	For easier material handling.
Water Recycling System	Reduces water consumption.
Gold Recovery Rate	60-95% (depending on material and setup)
Performance	
Material Handling	Suitable for clay-rich, gravel, or sandy soils
Operating Conditions	Can operate in wet or dry environments (with modifications)
Mobility	Mounted on a trailer or skids for easy transport
Transportation	
Setup Time	48~72 hours (depending on site conditions)
Dismantling Time	24~48 hours
Environmental Features	
Water Recycling	Reduces water usage and environmental impact
Low Noise	Designed for minimal noise pollution
Eco-Friendly	Minimal chemical use (if any)
Maintenance	
Lubrication Points	Easy-access grease points for bearings and moving parts
Wear Parts	Replaceable screens, spray bars, and riffles
Service Interval	Every 200-300 operating hours
Applications	
Placer gold mining\Alluvial gold recovery\River and stream mining	
Manufacturer Support	
Warranty	1-year limited warranty
Technical Support	Available for setup, operation, and troubleshooting
Spare Parts	Readily available for quick replacements



**JASON WEN**  
General manager & engineer

+8615779797570  
downunder4gold@163.com  
No.777 Qinglin road, Qingzhou city, Shandong  
province, China



DOWNUNDER4GOLD



Thank you for your attention.  
If you have any questions,  
please feel free to scan the  
code and contact us. Looking  
forward to hearing from you!

