

DOWNUNDER4GOLD

**DMT-5**

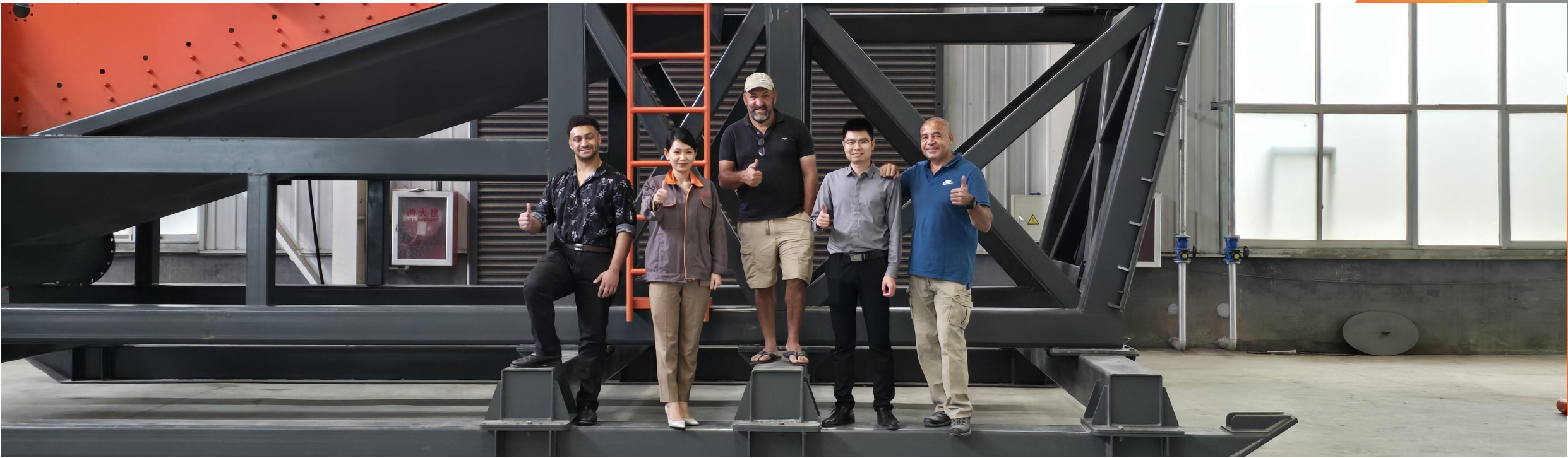
## Small Gold Wash Plant

Downunder (Shandong) Mining Technology Co.,Ltd.

Proudly Made In China



Product Overview



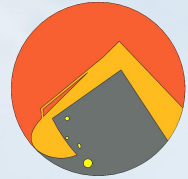
## About Downunder4gold

Downunder4Gold builds gold mining equipment the way miners need it to work — reliable, practical, and proven in real operations.

We specialize in complete alluvial gold mining solutions, not just individual machines. Our systems are designed by people with hands-on mining experience across multiple countries, who understand real challenges on site: inconsistent feed, water limitations, breakdown risks, logistics, and operator skill levels. This experience defines everything we do. We don't design equipment from catalog drawings or copy existing machines. We design systems based on how gold is actually recovered in the field, how operations fail, and how downtime costs money. Unlike most suppliers, we don't simply sell machines — we explain, adapt, and deliver working mining solutions. From material feeding and washing to classification, concentration, and gold recovery, every component is selected and engineered to work together as one reliable system. Our focus is simple: equipment that runs longer, breaks less, and keeps producing gold when conditions are complicated. Downunder4Gold combines real mining knowledge with in-house manufacturing, allowing us to build equipment that is not only competitively priced, but fit the purpose — especially in remote and tough mining environments.

If you are looking for equipment that works in real mining conditions, we are here to help you.

Downunder4Gold — Designed by miners. Built for efficient production.



DOWNUNDER4GOLD

# CONTENTS

---

**1**

**Product Introduction**

**2**

**Key Features**

**3**

**Components**

**4**

**How It Works**

**5**

**Applications**

**6**

**Advantages**

**7**

**Considerations**

**8**

**Product Parameters**



*Part 01*

# Product Introduction

Downunder (Shandong) Mining Technology Co.,Ltd.



DOWNUNDER4GOLD

Downunder (Shandong) Mining Technology Co.,Ltd.

Factory address: No.777 Qingling road, Qingzhou city, Weifang, Shandong Province, China

Mobile: +8615779797570 Email: downunder4gold@163.com

## Product Introduction



**DMT-5 is a 5-ton-per-hour** vibrating gold wash plant, is a compact and efficient piece of equipment designed for small-scale gold mining operations, prospecting, or testing gold-bearing areas. Unlike traditional trommel wash plants, this type of plant uses a vibrating screen to classify and wash material, making it highly efficient for processing smaller volumes of gold-bearing material. It is ideal for individual miners, small teams, or those working in remote locations with limited resources.



DOWNUNDER4GOLD

## *Part 02*

# Key Features

Downunder (Shandong) Mining Technology Co.,Ltd.



DOWNUNDER4GOLD

**Downunder (Shandong) Mining Technology Co.,Ltd.**

Factory address: No.777 Qingling road, Qingzhou city, Weifang, Shandong Province, China

Mobile: +8615779797570 Email: downunder4gold@163.com

## Key Features



### 01. Compact and Portable

Lightweight and easy to transport, often mounted on a trailer or skids.

### 02. Efficient Gold Recovery

Combines a vibrating screen and sluice box for effective gold recovery.

### 03. Low Water Usage

Designed to operate with minimal water, and some models include water recycling systems.

### 04. Ease of Operation

Simple to set up and use, requiring minimal technical expertise.

### 05. Cost-Effective

Affordable compared to larger wash plants, making it ideal for small-scale miners.

### 06. Durability

Built with robust materials to withstand harsh mining conditions.

### 07. Vibrating Screen

Provides efficient material classification and washing, ensuring high recovery rates.



# *Part 03*

## **Components**

Downunder (Shandong) Mining Technology Co.,Ltd.



DOWNUNDER4GOLD

Downunder (Shandong) Mining Technology Co.,Ltd.

Factory address: No.777 Qingling road, Qingzhou city, Weifang, Shandong Province, China

Mobile: +8615779797570 Email: downunder4gold@163.com

## Components

### 7. Optional Add-Ons

extra sluice box.

### 6. Support Structure

A sturdy frame to support the vibrating screen, sluice box, and other components.

### 5. Water Pump

Supplies water to the spray bars for washing.

### 4. Sluice Box

A gold recovery system with riffles to trap gold particles as water washes the material through.



### 1. Feeding Hopper

Where raw material (gravel, soil, or sediment) is loaded into the plant.

### 2. Vibrating Screen

A vibrating deck with mesh screens that classifies material by size and washes it simultaneously.

### 3. Spray Bars

Water jets above the vibrating screen wash the material, breaking up clay and releasing gold particles.



# *Part 04*

## **How It Works**

**Downunder (Shandong) Mining Technology Co.,Ltd.**



DOWNUNDER4GOLD

# How It Works

## Material Feeding

01

Raw material is fed into the hopper.

## Vibrating Screen Classification

02

The vibrating screen separates larger rocks and debris while washing the finer material.

03

## Washing and Classification

Water from the spray bars breaks down clay and washes the material, allowing gold and finer particles to pass through the screen.

04

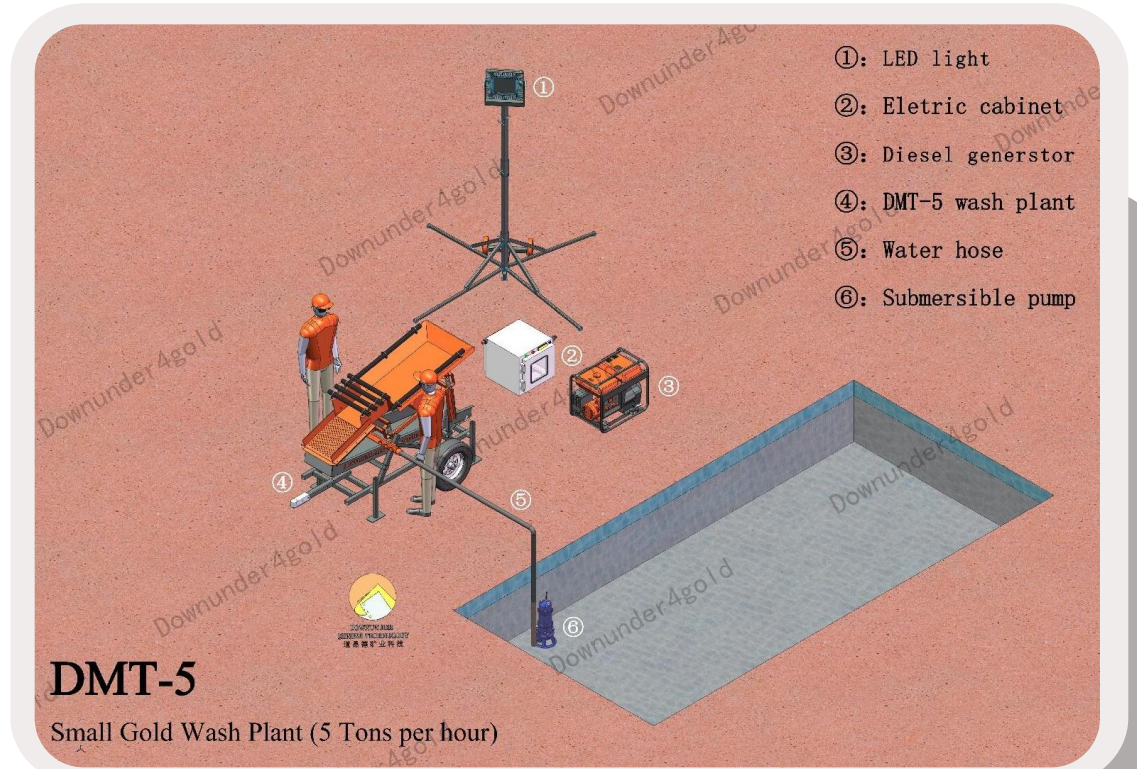
## Gold Recovery

The washed material flows into the sluice box, where gold particles are trapped by the riffles.

05

## Concentrate Collection

Concentrates from the sluice box are collected for further processing or refining..





## *Part 05*

# Applications

Downunder (Shandong) Mining Technology Co.,Ltd.



DOWNUNDER4GOLD

**Downunder (Shandong) Mining Technology Co.,Ltd.**

Factory address: No.777 Qingling road, Qingzhou city, Weifang, Shandong Province, China

Mobile: +8615779797570 Email: downunder4gold@163.com

## Applications



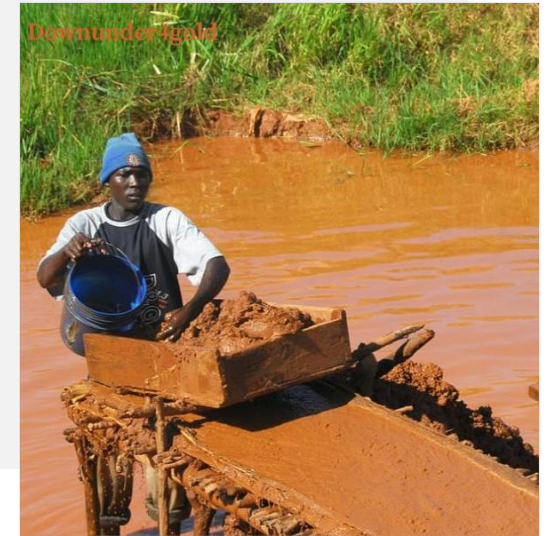
**Processing placer deposits in remote locations**



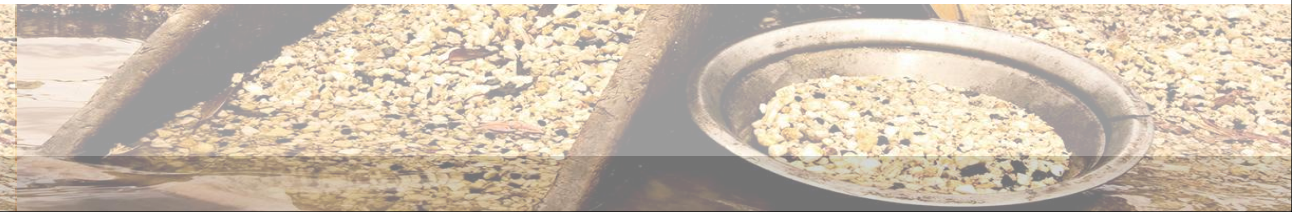
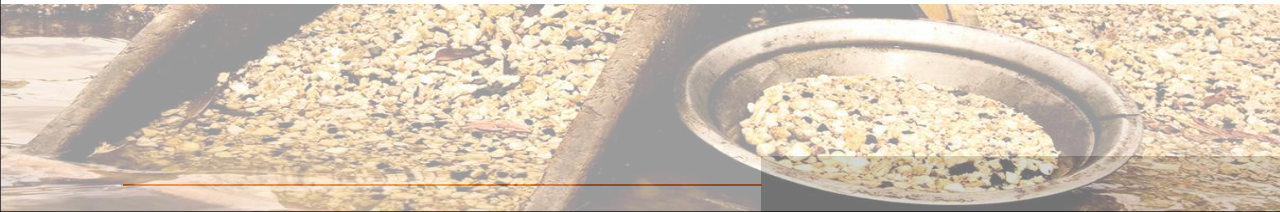
**Sampling and testing gold-bearing areas**



**Prospecting and exploration**



**Small-scale gold mining**





# *Part 06*

## **Advantages**

Downunder (Shandong) Mining Technology Co.,Ltd.



DOWNUNDER4GOLD

**Downunder (Shandong) Mining Technology Co.,Ltd.**

Factory address: No.777 Qingling road, Qingzhou city, Weifang, Shandong Province, China

Mobile: +8615779797570 Email: downunder4gold@163.com

## Advantages

### 1. Portability

Easy to transport and set up in remote areas.

### 3. Vibrating Screen Efficiency

Provides better material classification and washing compared to traditional trommels.

### 5. Environmentally Friendly

Minimal environmental impact compared to larger mining operations.

### 2. Low Operating Costs

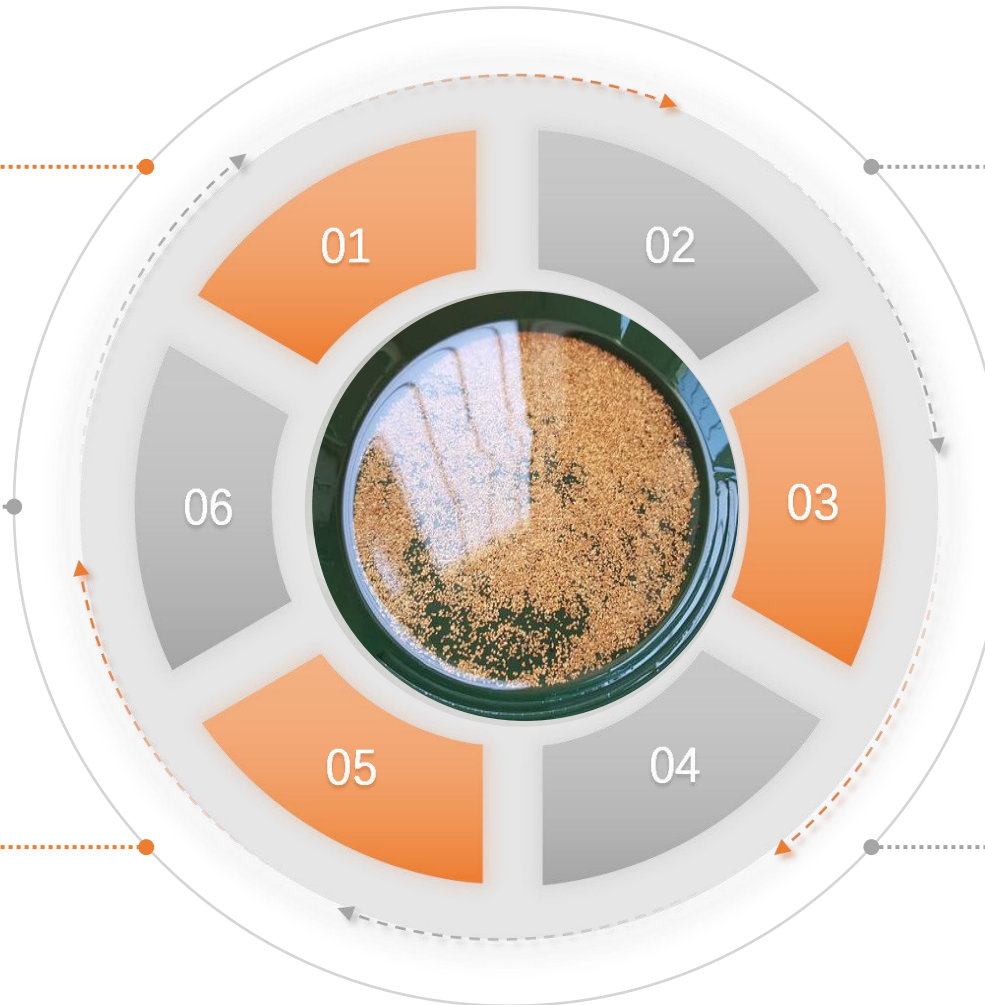
Requires minimal water and power.

### 4. Efficient Recovery

High gold recovery rates for small-scale operations.

### 6. User-Friendly

Simple to operate, even for beginners.





## *Part 07*

# Considerations

Downunder (Shandong) Mining Technology Co.,Ltd.



DOWNUNDER4GOLD

Downunder (Shandong) Mining Technology Co.,Ltd.

Factory address: No.777 Qingling road, Qingzhou city, Weifang, Shandong Province, China

Mobile: +8615779797570 Email: downunder4gold@163.com

## Considerations



### -Water Supply

Requires a reliable water source for operation.



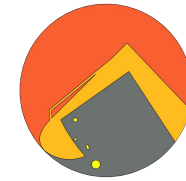
### - Power Supply

May need a generator or external power source in remote locations.



### - Material Handling

Best suited for small-scale operations with limited material volume.



DOWNUNDER4GOLD

## *Part 08*

# Product parameters

Downunder (Shandong) Mining Technology Co.,Ltd.



DOWNUNDER4GOLD

Downunder (Shandong) Mining Technology Co.,Ltd.

Factory address: No.777 Qingling road, Qingzhou city, Weifang, Shandong Province, China

Mobile: +8615779797570 Email: downunder4gold@163.com

## Product parameters



This technical data sheet provides a comprehensive overview of a 5 ton-per-hour gold trommel wash plant. For specific details or customization options, consult Downunder4gold.

### Technical Data Sheet: 5-Ton-Per-Hour Vibrating Gold Wash Plant

#### General Specifications

Model	DMT-5
Capacity	5 tons per hour (depending on material type and conditions)
Power Requirement	3-5 kw (depending on configuration)
Water Requirement	15-25 cubic meter hour (m <sup>3</sup> /h)
Dimensions (L x W x H)	2.0*1.2*1.5m
Weight	470 kg (depending on configuration)
Material	High-grade steel (wear-resistant and durable)

#### Vibrating Screen Specifications

Screen Size	0.8 m x 2m (approx.)
Screen Mesh Size	Customizable (e.g., 10mm, 20mm, or 30mm)
Vibration Frequency	Adjustable for optimal material handling
Spray Bars	4-6 bars with high-pressure for efficient washing
Drive System	Electric motor

#### Sluice Box Specifications

Length	2 meters
Riffle Design	Hungarian riffles or expanded metal riffles
Matting	Rubber matting or miner's moss or dream mat for gold trapping
Adjust-ability	Sluice angle can be adjusted for optimal recovery
Delivery time	7-30 days (depends on order, normally have in stock)
Container loading capacity	6 units/20GP, 24 units/40HQ



**JASON WEN**  
General manager & engineer

+8615779797570  
downunder4gold@163.com  
No.777 Qinglin road, Qingzhou city, Shandong  
province, China



Downunder4gold



Thank you for your attention.  
If you have any questions,  
please feel free to scan the  
code and contact us. Looking  
forward to hearing from you!

