

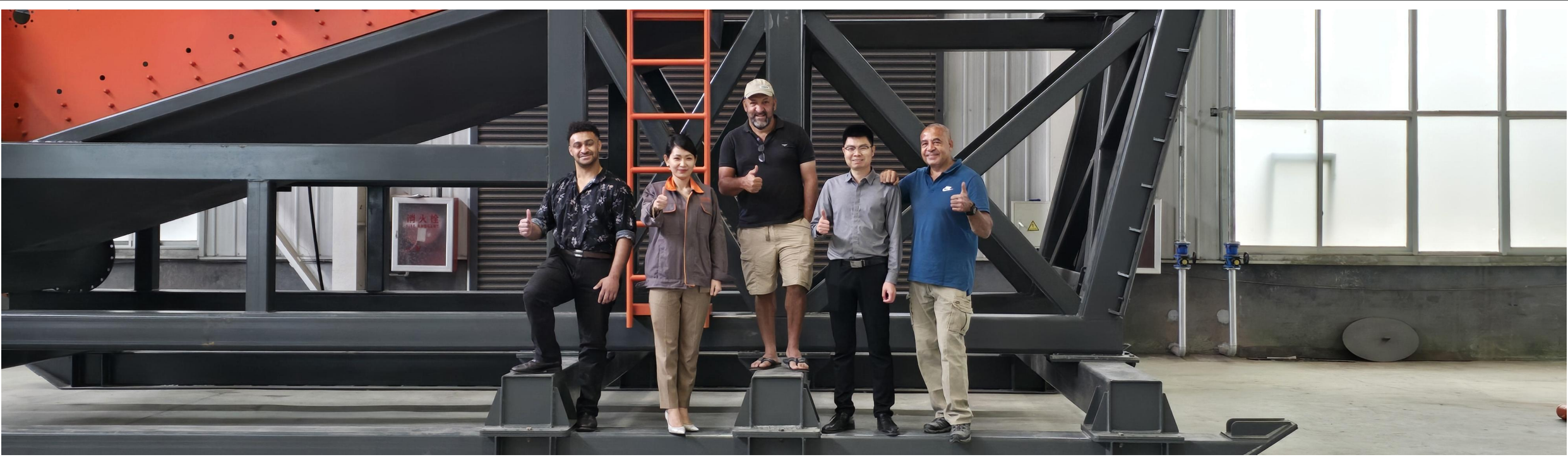
DOWNUNDER4GOLD

# DMT-100 Pro

## Gold Trommel Wash Plant

Downunder (Shandong) Mining Technology Co.,Ltd.

Proudly Made In China



## About Downunder4gold

### Proudly Made In China

Downunder (Shandong) Mining Technology Co., Ltd. (Downunder4gold), established in 2023, is a trusted machinery enterprise specializing in artisanal and small-scale gold mining (ASGM) solutions, large-scale gold mining equipment manufacturing, and comprehensive one-stop services. Backed by our in-house machinery factory, we integrate design, production, and supply to deliver end-to-end value for our clients. Our team of seasoned designers and fabricators is dedicated to providing premium-quality services, ensuring every product meets the highest industry standards. Headquartered in Weifang, Shandong Province, China, we operate as a global innovator and supplier of gold mining machinery, complemented by robust trading and sourcing capabilities.

What sets us apart? Our uniquely engineered equipment is designed for exceptional efficiency—streamlining operations and saving your team critical time across the mining season. Beyond machinery, we stand by you as a reliable partner: our highly experienced professionals offer lifelong mechanical and technical support, ensuring your equipment performs at its best, from installation to long-term operation.

Choose Downunder4gold—where innovation meets reliability, and your success is our priority.



# CONTENTS

**1** Product Introduction

**2** Key Features

**3** Components

**4** How It Works

**5** Applications

**6** Advantages

**7** Considerations

**8** Product Parameters



*Part 01*

# Product Introduction

Downunder (Shandong) Mining Technology Co.,Ltd.



Product Overview



DOWNUNDER4GOLD

Downunder (Shandong) Mining Technology Co.,Ltd.

Factory address: No.777 Qingling road, Qingzhou city, Weifang, Shandong Province, China

Mobile: +8615779797570 Email: downunder4gold@163.com

## Product Introduction



**DMT-100 Pro gold trommel wash plant** is a large-scale, high-capacity mining equipment designed for efficient gold recovery from placer deposits, such as riverbeds, alluvial soils, or other gold-bearing materials. This type of wash plant is capable of processing 100-150 tons of material per hour, making it ideal for commercial mining operations, large-scale contractors, or mining companies with significant gold-bearing material to process.



## *Part 02*

# Key Features

Downunder (Shandong) Mining Technology Co.,Ltd.





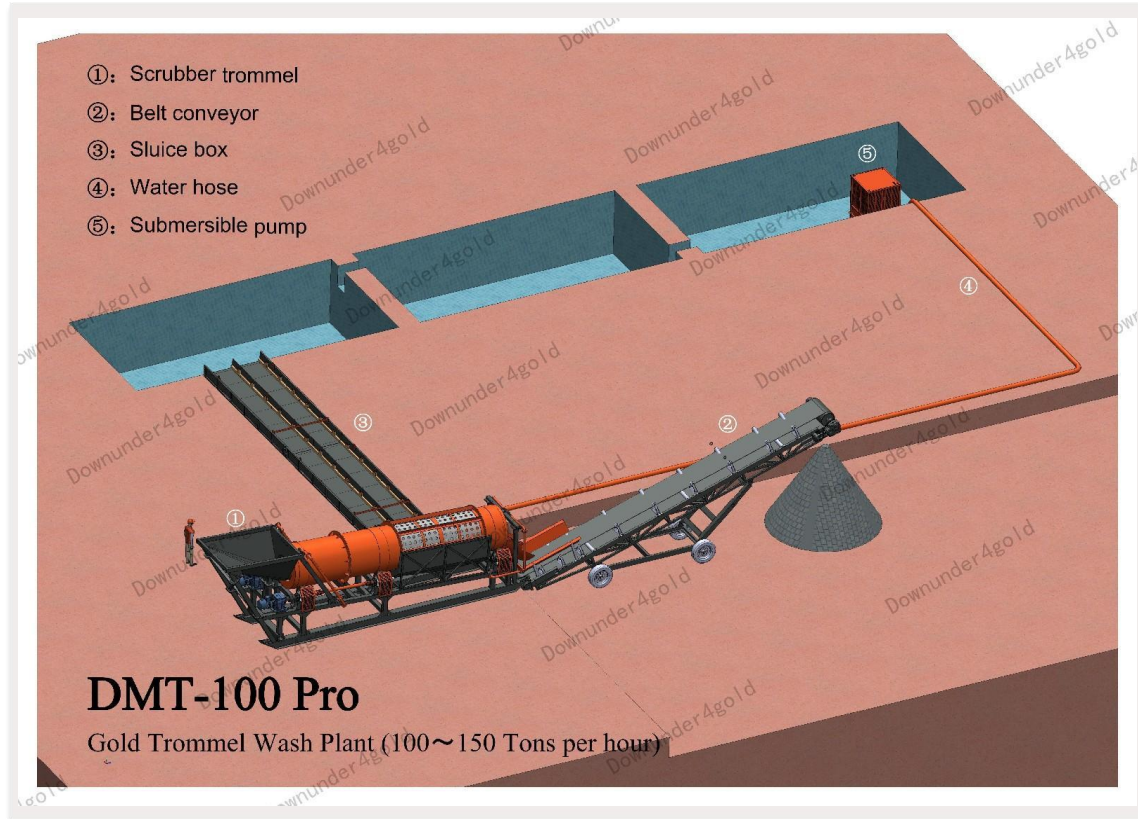
DOWNUNDER4GOLD

Downunder (Shandong) Mining Technology Co.,Ltd.

Factory address: No.777 Qingling road, Qingzhou city, Weifang, Shandong Province, China

Mobile: +8615779797570 Email: downunder4gold@163.com

## Key Features



### 1. High Capacity

Processes up to 100-150 tons of material per hour, making it suitable for large-scale operations.

### 2. Trommel Design

Features a large, rotating trommel screen to classify and separate material by size, ensuring efficient washing and gold recovery.

### 3. Durability

Built with heavy-duty materials to withstand harsh mining conditions and continuous operation.

### 4. Modular Design

Often modular for easy assembly, disassembly, and transportation.

### 5. Water Recycling System

Includes water recycling systems to reduce water consumption and environmental impact.

### 6. Customizable

Can be tailored to specific mining conditions, such as adding a sluice box, centrifugal concentrator, or other gold recovery systems.

### 7. Low Maintenance

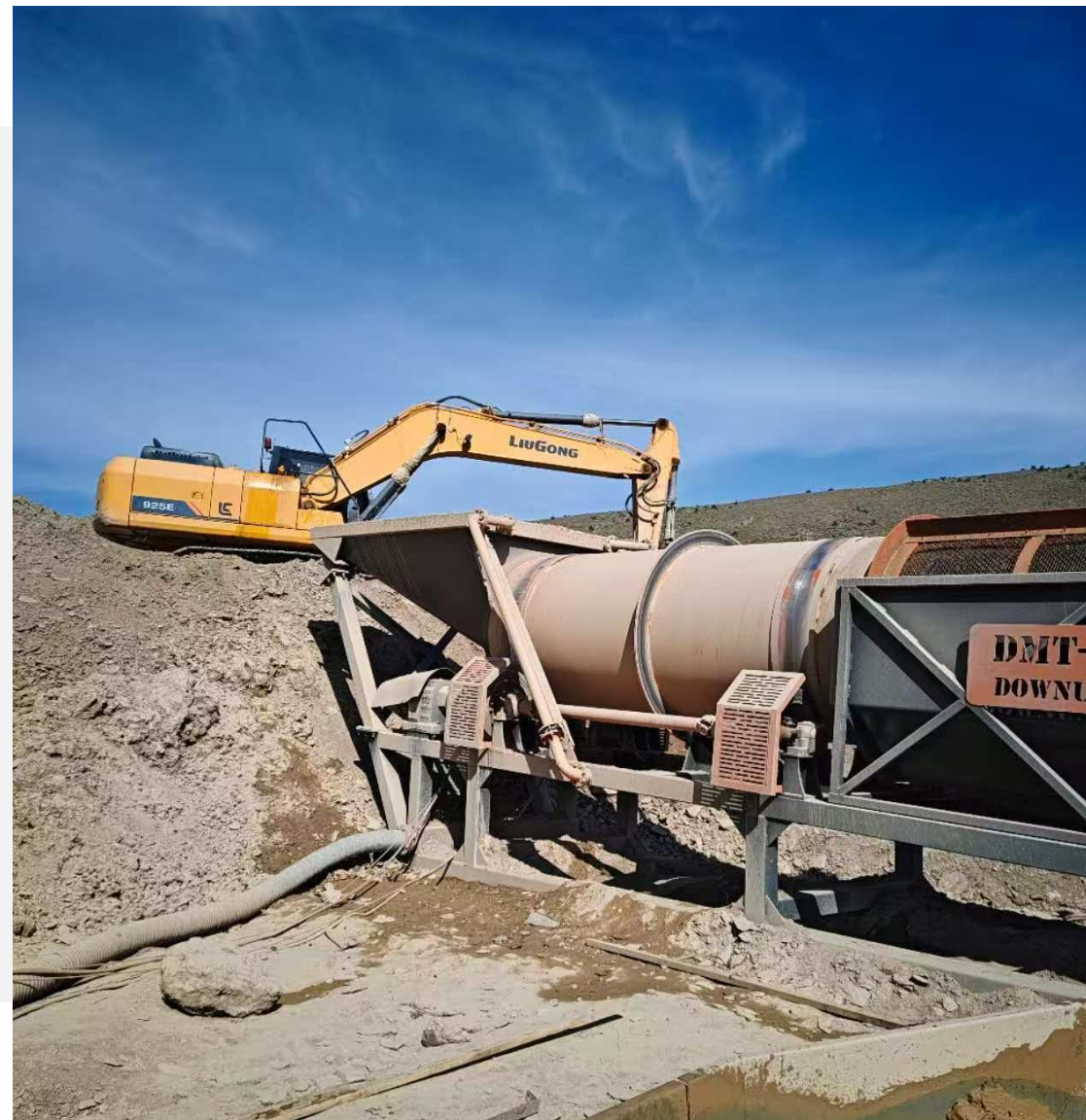
Designed for minimal downtime and easy maintenance.



# Part 03

## Components

Downunder (Shandong) Mining Technology Co.,Ltd.





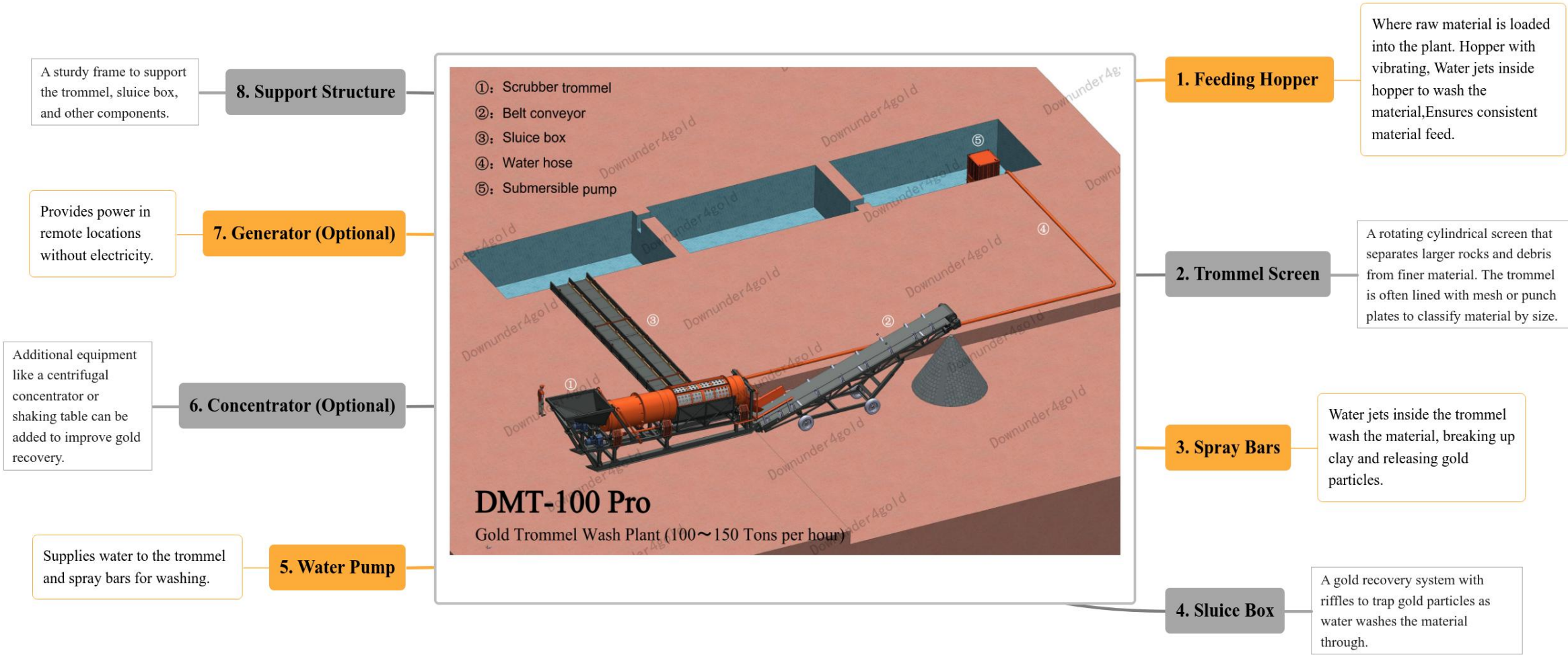
DOWNUNDER4GOLD

Downunder (Shandong) Mining Technology Co.,Ltd.

Factory address: No.777 Qingling road, Qingzhou city, Weifang, Shandong Province, China

Mobile: +8615779797570 Email: downunder4gold@163.com

# Components

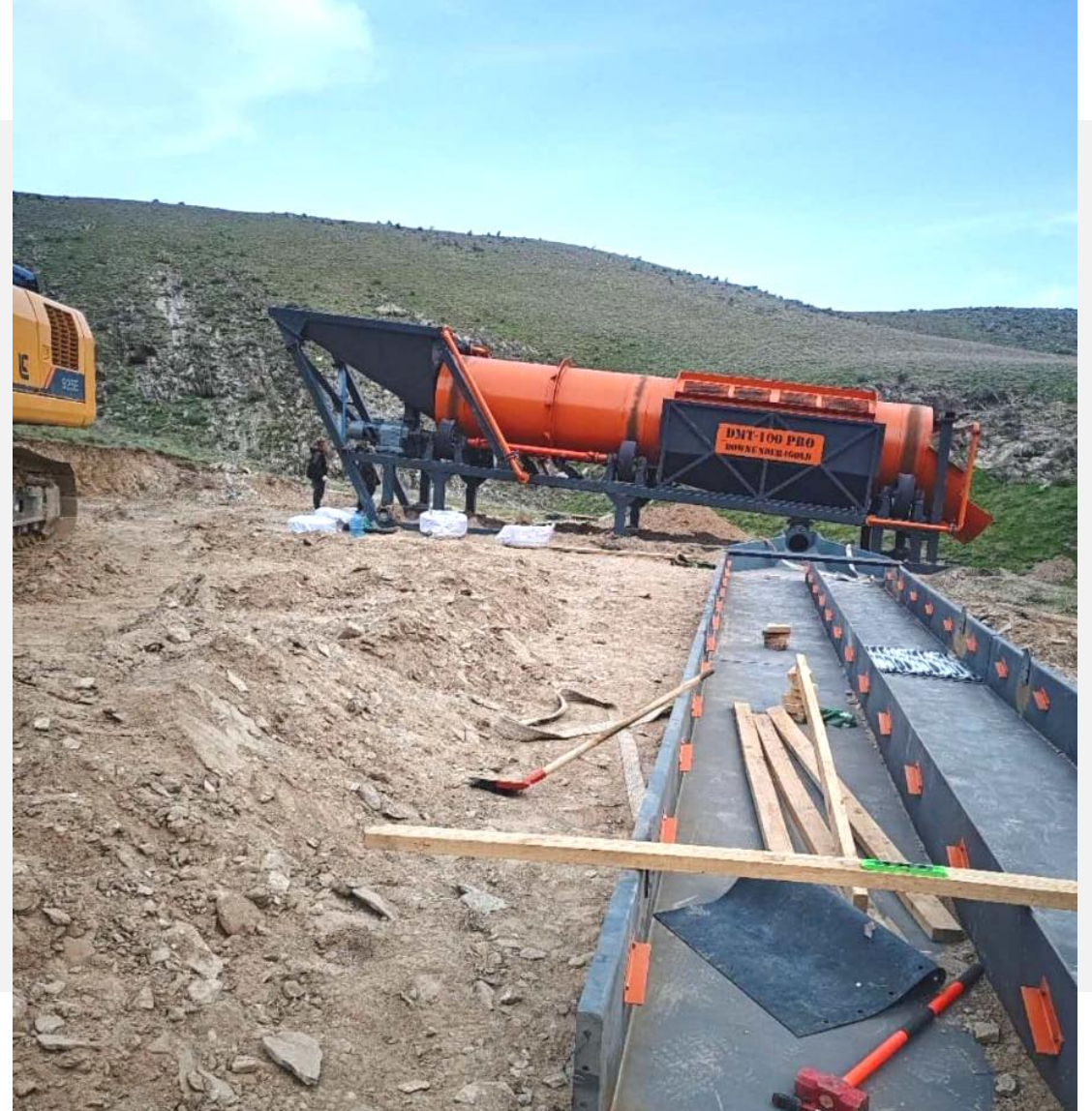




# Part 04

## How It Works

Downunder (Shandong) Mining Technology Co.,Ltd.





DOWNUNDER4GOLD

Downunder (Shandong) Mining Technology Co.,Ltd.

Factory address: No.777 Qingling road, Qingzhou city, Weifang, Shandong Province, China

Mobile: +8615779797570 Email: downunder4gold@163.com

## How It Works



### Gold Recovery

The washed material flows into the sluice box, where gold particles are trapped by the riffles.

### Concentrate Collection

The washed material flows into the sluice box, where gold particles are trapped by the riffles.

### 1 Material Feeding

Raw material (gravel, soil, or sediment) is fed into the hopper.

2

### 3 Washing and Classification

Water from the spray bars breaks down clay and washes the material, allowing gold and finer particles to pass through the trommel screen.

4

### 5 Concentrate Collection

Water from the spray bars breaks down clay and washes the material, allowing gold and finer particles to pass through the trommel screen.



## *Part 05*

# Applications

Downunder (Shandong) Mining Technology Co.,Ltd.





DOWNUNDER4GOLD

Downunder (Shandong) Mining Technology Co.,Ltd.

Factory address: No.777 Qingling road, Qingzhou city, Weifang, Shandong Province, China

Mobile: +8615779797570 Email: downunder4gold@163.com

## Applications



Alluvial gold recovery in riverbeds or floodplains



Large-scale placer gold mining



Processing large volumes of gold-bearing material



Commercial mining operations



## *Part 06*

# Advantages

Downunder (Shandong) Mining Technology Co.,Ltd.





DOWNUNDER4GOLD

Downunder (Shandong) Mining Technology Co.,Ltd.

Factory address: No.777 Qingling road, Qingzhou city, Weifang, Shandong Province, China

Mobile: +8615779797570 Email: downunder4gold@163.com

## Advantages

1

### High Throughput

Capable of processing 100 tons of material per hour, making it efficient for large operations.

2

### Efficient Gold Recovery

Combines trommel washing and sluice box recovery for high gold recovery rates.

3

### Portable or Semi-Portable

Many models are designed for easy relocation, though they are larger than mini wash plants.

4

### Scalable

Can be customized with additional equipment to improve recovery rates.

5

### Environmentally Friendly

Water recycling systems reduce water usage and environmental impact. It's optional.



# Part 07

## Considerations

Downunder (Shandong) Mining Technology Co.,Ltd.





DOWNUNDER4GOLD

Downunder (Shandong) Mining Technology Co.,Ltd.

Factory address: No.777 Qingling road, Qingzhou city, Weifang, Shandong Province, China

Mobile: +8615779797570 Email: downunder4gold@163.com

## Considerations



**- Water Supply:**  
Requires a reliable  
watersource for operation.

### - Power Supply:

May need a generator or  
external power source in  
remote locations.



### - Setup Time:

Larger than mini wash  
plants, so setup and  
disassembly may take more  
time.



### - Cost:

Higher initial investment  
compared to smaller wash  
plants, but justified by  
higher throughput and  
efficiency.

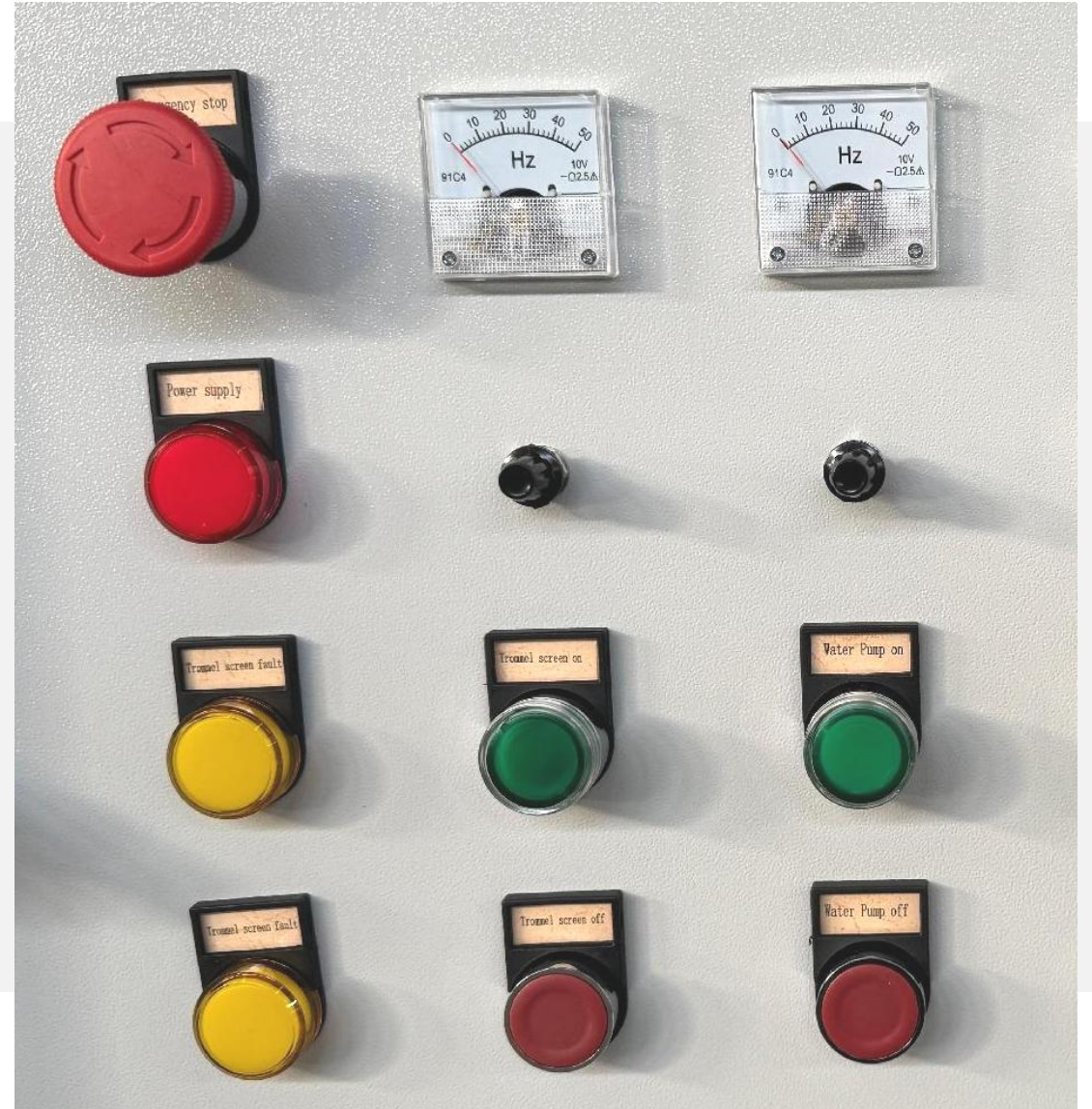




# Part 08

## Product parameters

Downunder (Shandong) Mining Technology Co.,Ltd.





DOWNUNDER4GOLD

Downunder (Shandong) Mining Technology Co.,Ltd.

Factory address: No.777 Qingling road, Qingzhou city, Weifang, Shandong Province, China

Mobile: +8615779797570 Email: downunder4gold@163.com

## Product parameters

### Technical Data Sheet: DMT-100 Pro gold trommel wash plant

#### General Specifications

Model	DMT-100 Pro
Capacity	100-150 tons per hour (depending on material type and conditions)
Power Requirement	60-100 kW (depending on configuration)
Water Requirement	200-400 cubic meter hour(m <sup>3</sup> /h)
Dimensions (L x W x H)	11800*2300*3500 mm (approx.)
Weight	17,000-22,000 kg (depending on configuration)
Material	High-grade steel (wear-resistant and durable)

#### Trommel Specifications

Trommel Diameter	1.5 meters
Trommel Length	8.5 meters
Screen Mesh Size	Customizable (e.g., 10mm, 20mm, or 30mm)
Rotation Speed	8-12 RPM (adjustable)
Spray Bars	6-8 bars with high-pressure nozzles for efficient washing
Drive System	Electric motor

#### Sluice Box Specifications

Length	6-12 meters
Width	1.0 meters or 2.0 meters
Riffle Design	Hungarian riffles or expanded metal riffles
Matting	Rubber matting or miner's moss or dream mat for gold trapping
Adjustability	Sluice angle can be adjusted for optimal recovery

#### Water System

Water Pump	6-8 inch centrifugal pump or submersible pump
Flow Rate	200 m <sup>3</sup> /h-350 m <sup>3</sup> /h
Water Recycling	Optional water recycling system available
Hose Diameter	6-8 inches
Hose Type	PVC Lay-flat or rubber hose



Downunder4gold



DOWNUNDER4GOLD

Downunder (Shandong) Mining Technology Co.,Ltd.

Factory address: No.777 Qingling road, Qingzhou city, Weifang, Shandong Province, China

Mobile: +8615779797570 Email: downunder4gold@163.com

## Product parameters



This technical data sheet provides a comprehensive overview of a 100~150 ton-per-hour gold trommel wash plant. For specific details or customization options, consult Downunder4gold.

Power Options	
Electric Motor	Trommel 30kw + Water pump 37kw (standard)
Diesel Engine	Optional for remote locations
Generator	Available as an add-on for off-grid operations
Optional Add-Ons	
Centrifugal Concentrator	Enhances fine gold recovery.
Shaking Table	For final concentration of gold.
Conveyor Belt	For easier material handling.
Water Recycling System	Reduces water consumption.
Gold Recovery Rate	60-95% (depending on material and setup)
Performance	
Material Handling	Suitable for clay-rich, gravel, or sandy soils
Operating Conditions	Can operate in wet or dry environments (with modifications)
Mobility	Mounted on a trailer or skids for easy transport
Transportation:	
Setup Time	6-8 hours (depending on site conditions)
Dismantling Time	4-6 hours
Environmental Features	
Water Recycling	Reduces water usage and environmental impact
Low Noise	Designed for minimal noise pollution
Eco-Friendly	Minimal chemical use (if any)
Maintenance	
Lubrication Points	Easy-access grease points for bearings and moving parts
Wear Parts	Replaceable trommel screens, spray bars, and riffles
Service Interval	Every 200-300 operating hours
Applications	
	Placer gold mining\Alluvial gold recovery\River and stream mining
Manufacturer Support	
Warranty	1-year limited warranty
Technical Support	Available for setup, operation, and troubleshooting
Spare Parts	Readily available for quick replacements



**JASON WEN**  
General manager & engineer

+8615779797570  
downunder4gold@163.com  
No.777 Qinglin road, Qingzhou city, Shandong  
province, China



Downunder4gold



Thank you for your attention.  
If you have any questions,  
please feel free to scan the  
code and contact us. Looking  
forward to hearing from you!

